

# MT612 /615X

Wifi mini PCI adapter  
with antenna



## RZ0600655 Specification

Standards: IEEE 802.11 b/g

Interface: Mini PCI

Controller Chip: VIA VT6655

Connectors: 2 x U.FL (I-PEX) Antenna connectors

Security: Supports WPA and WPA 2.0; Built-in hardware security engine for 802.11i 4.0. WEP (128-bit, 64-bit), TKIP, AES CCMP

Frequency Range: 2.4 ~ 2.4835 GHz (for US, Canada, Europe)

Power Consumption: 384 uA, Suspend mode, 120 mA, Normal mode, 250 mA, Active/high speed mode

Operating Voltage: 3.3V

Dimensions: (w x h x d) 64.7mm x 3.8 mm x 44.6mm

2.55" x 0.15" x 1.76"

## RZ0600240 specification

Electrical specification

1. Frequency range: 2400 – 2500MHz

2. Gain: 2.0dBi

3. VSWR:  $\leq 2.0$





4. Polarization: Linear, vertical

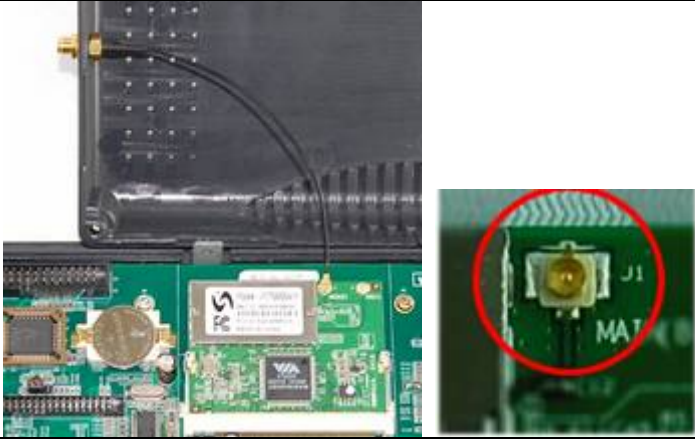


5. Impedance: 50 Ohm

6. Connector: RP-SMA plug

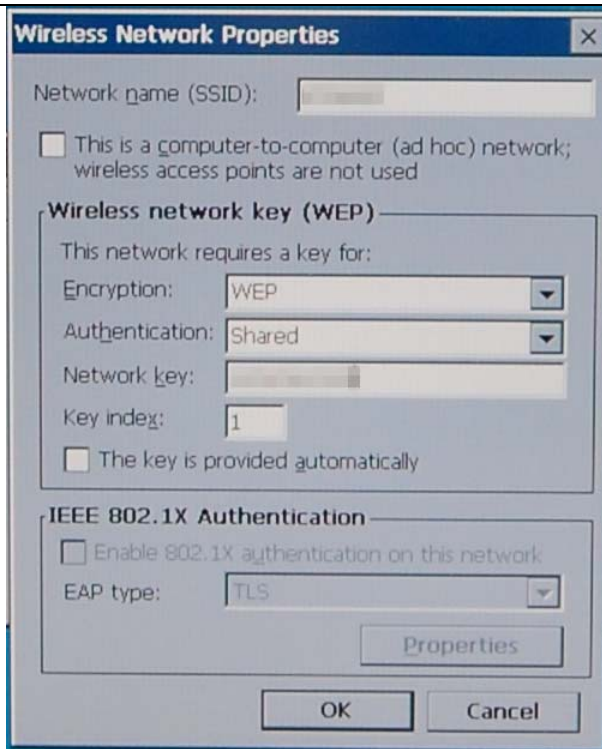
( Reverse Polarity meets FCC part 15. 203 Requirement )

*Installation Instruction:*

1	 <p>The image shows the components for wireless installation: a black antenna (RZ0600240), a green mini PCI wireless module (RZ0600655), and an antenna base (RZC600120) with two gold-colored screws. The parts are laid out on a light blue surface.</p>	<p><b>Wireless Accessories:</b></p> <ol style="list-style-type: none"><li>1. <b>RZ0600655 *1</b> mini PCI wireless module</li><li>2. <b>RZ0600240 *1</b> antenna</li><li>3. <b>RZC600120 *1</b> antenna base</li></ol>
2	 <p>The image shows the internal components of the device with the rear case removed. A green mini PCI slot is visible on the motherboard, and the antenna base is already partially installed.</p>	<p>Open the rear case Insert wireless module to mini PCI slot</p>
3	 <p>The image shows the rear case of the device with a hole drilled into it, intended for the antenna base.</p>	<p><b>Drill a hole on the rear case, diameter 6mm</b></p>
4	 <p>The image shows the antenna base installed on the rear case, secured with a hex wrench.</p>	<p><b>Equip antenna base and tighten by the Hex wrench</b></p>

5		<p><b>Connect antenna cable to J1 connector of the wireless module.</b></p>
6		<p><b>Close the rear case, equip the antenna.</b></p>
7		<p><b>When starting up Windows CE, wireless network setting dialog will pop up. Please designate the wireless station.</b></p>

8



**Set up the wireless network key**

9



**In CECP, SAVE Registry. Now, you can access the Internet via wireless!!**

**RZC600120 specification:**

